



UltraLite ALS[®]
TURBO

NORTHSTAR

FORENSIC/PUBLIC SAFETY
CATALOG



CAO GROUP, INC.
Easier · Faster · Better™



Please Contact Us For Product Pricing

Don't see what you are looking for?

Contact Us at:

CAO Group Inc
4628 West Skyhawk Drive
West Jordan, UT 84084-4501, USA

Toll Free: 1.877.877.9778

Direct: 1.801.256.9282

Fax: 1.801.256.9287

forensic@caogroup.com

northstar@caogroup.com

All literature, along with information on other innovative products,
can be found on our website:

www.caogroup.com/forensic

Table of Contents

UltraLite ALS®

About	4
Features	6
Forensic Kits	8
Infrared and Ultraviolet Kits	10
Domestic Violence and Sexual Assault Kits	13
Ultralite ALS Heads	14
Head Wavelength and Uses	15
Accessories	17

NorthStar™

About	20
Flare Kits	21
Applications	22
Product List	23

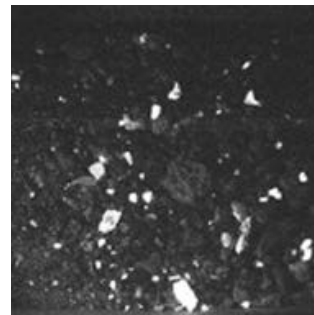
About UltraLite ALS®

The CAO Group (CAO), is a world-leading high-technology company. CAO continues to lead innovation in the forensic light industry with the launch of the new UltraLite ALS Turbo heads. The UltraLite ALS and its Blue-Merge Technology (BMT™) are at the very pinnacle of cutting edge technology. The breakthroughs were so large in scope it took 4 separate US Patent applications to cover them all. The UltraLite ALS and its BMT cutting edge technology are changing the face of forensic science forever.

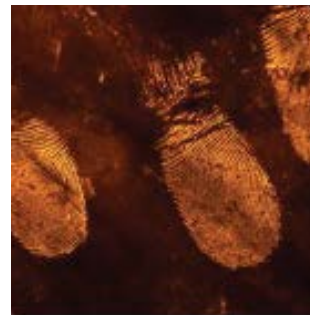
The UltraLite ALS has quickly become the NEW industry standard in forensic scene lighting. Its breakthrough BMT Technology far surpasses conventional UV and Argon scene lighting techniques, revealing substances in the field that once required days or even weeks of laboratory time to detect and classify. The UltraLite ALS provides real time, on-site detection and identification of multiple evidence types.

CAO's UltraLite ALS forensic light system, is an industry standard and leading brand of forensic lights. The Turbo technology enhances detection of trace evidence, body fluids, fingerprints, blood spatter, gunshot residues and explosive accelerants. These substances may otherwise be difficult to detect against background materials so evidence can remain unseen. Additionally, the Turbo technology helps to reveal subcutaneous bruising, injuries and wounds on both living and dead bodies and assists in the location of evidence containing DNA.

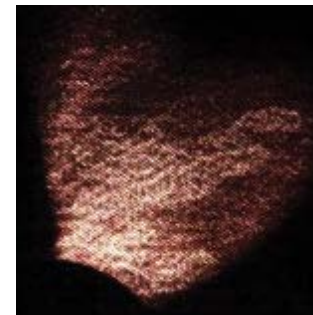
“Our new UltraLite ALS Turbo forensic technology offers higher detection capabilities and represents the culmination of nearly a decade of forensic research and design,” said Dr. Densen Cao, CEO and founder of CAO. “Our scientists and developers have worked closely with forensics experts who have combined experience of more than 50 years to ensure we deliver the best system for efficient processing of crime scenes and evidence.”



Bone Fragments



Fingerprints



Fluids



Fibers



“The UltraLite ALS is the most versatile and the most valuable crime scene tool... It’s easy to operate and is a very powerful light source.”

~ Dr. Henry C. Lee

The UltraLite ALS system’s main head, called the BMT Turbo head, is a universal evidence and crime scene processing light. The BMT Turbo head offers a wavelength spectrum that now shows more than 99.5 percent of detectable evidence, resulting in more efficient processing of crime scenes. The BMT Turbo head also produces more blue wavelength output power than any other semiconductor-based ALS.

The UltraLite ALS packs all of this functionality into a lightweight, battery-powered unit that’s rugged and ready for the field. The high-intensity LED light source puts up to 1000 milliwatts of selectable lamp power into an ergonomic, hand-held unit, at a price-point even the smallest of agencies can afford.



Photo courtesy of New Haven University

Blue-Merge Technology (BMT) Turbo

BMT Turbo is the perfect merging of forensic wavelengths. It is proven that shorter wavelengths such as 450 nm are more useful in body fluids, teeth and bone fragments, bite marks and bruise work, while longer wavelengths such as 480 nm are more useful in finding trace evidence and fingerprint work. BMT mixes a unique profile of forensic wavelengths to produce the perfect blend. With the BMT light you only need to go over the scene or evidence one time with one filter to complete 99.5% of evidence detection, collection, and documentation work.



Power Output

The UltraLite ALS in BMT Turbo produces over 2000 milliwatts of power. The UltraLite ALS with BMT Turbo produces more blue wavelength output power than any other semiconductor based ALS. Each unit has an output intensity selector button that allows you to select 500 mW, 1000 mW, 1500 mW, and 2000 mW.

Size and Weight

At a size of 6" x 4.5" x 1.25" and a weight of less than 300 grams (including optional battery pack), the UltraLite ALS Turbo represents the smallest, lightest weight forensic light system in the world.

Power Requirements

The UltraLite ALS can be powered by a 90-240 AC input or by a 12 VDC Vehicle Power Adapter. The UltraLite ALS Turbo produces light by way of Light Emitting Diodes (LED). These LEDs do not have delicate filaments and are not 'jar' sensitive. The expected lifetime of these LEDs is 50,000+ hours.

Lamp Type

Solid State Light Producing Semiconductors (LPS)

Lamp Life

5000+ Hours continuous at maximum power

Lamp Power

400 mW, 600 mW, 800 mW and 1000 mW (selectable with switch)

Lamp Output

50-2000 (mW) Four output settings (depending on head used)

Ruggedness

The UltraLite ALS is built with the latest technology and uses LEDs which do not have delicate filaments and are not jar sensitive. The construction is made from rugged and reliable aluminum / magnesium alloy. Bulbs are solid state/impact resistant. Each head contains a small cooling fan. Temperatures can affect battery performance. Below 0°C, batteries may not last the 1 hour indicated on previous page. Stored for long periods at 45°C (105°F), the battery charge may be reduced.

Water Resistance

Do Not submerge. Avoid direct water spray or heavy rain. In humid environments, allow to dry when not in use.



Price

The UltraLite ALS Turbo is a small fraction of the cost of other ALS systems and forensic laser systems.

Standard Tripod

Designed for handheld use. Tripod mounting hole integral to device for photography. Immediately above the battery indicator light is the tripod mount hole. This mounting hole will mate the UltraLite ALS to any standard tripod for documentation work.

Battery Pack

Slip one battery out and the other one in, similar to changing the magazine clip in a pistol. Dead batteries can be charged in 3 hours. 1 hour continuous use at maximum power output.

Carrying Case

Lined with die cut foam to provide the ultimate protection for your UltraLite ALS Turbo Kit.

Backward Compatible

All of the new Turbo Heads are compatible with all of the existing UltraLite ALS handles, batteries, chargers, filters and other accessories.

Construction

The handle and head are made of an aluminum magnesium alloy. This metal construction yields a rugged and reliable instrument. The UltraLite ALS size, weight and ergonomic design make the easiest and most comfortable-to-use forensic system in the world.



Photo courtesy of New Haven University

UltraLite ALS Ultra Turbo Kit – 200-00106

One of the most powerful handheld solid-state forensic lights in the industry has just gotten more powerful, doubling its output. This Kit is the ultimate package and contains everything you will ever need to uncover over 99.5% of detectable evidence, conveniently fitting into a carry case configured to accept all the accessories. With more precise detection, you will have more evidence for the conviction.



Includes:

- 1 UltraLite Handle
- 1 Power Pack Adapter
- 1 Power Supply (90-240 VAC)
- 1 Vehicle Power Supply (12 VDC)
- 1 20 ft Extension Cord
- 1 Battery Charger
- 3 Rechargeable Battery Packs
- 1 Pair of Amber Glasses
- 1 Pair of Yellow Glasses
- 1 Pair of Red Glasses
- 3 Glasses Bags
- 1 BMT Head
- 1 UV Head
- 1 Yellow Head
- 1 Green Head
- 1 Red Head
- 1 White Head
- 1 UltraLite ALS Case with die-cut foam (not shown)

UltraLite ALS Complete Turbo Kit – 200-00111

This Kit includes all the tools you will need to detect evidence, conveniently fitting into a carry case configured to accept all the accessories. With more precise detection, you will have more evidence for the conviction.



Includes:

- 1 UltraLite Handle
- 1 Power Pack Adapter
- 1 Power Supply (90-240 VAC)
- 1 Vehicle Power Supply (12 VDC)
- 1 20 ft Extension Cord
- 1 Battery Charger
- 3 Rechargeable Battery Packs
- 1 Pair of Amber Glasses
- 1 Pair of Yellow Glasses
- 1 Pair of Red Glasses
- 3 Glasses Bags
- 1 BMT Head
- 1 UV Head
- 1 Yellow Head
- 1 Green Head
- 1 Red Head
- 1 UltraLite ALS Case with die-cut foam (not shown)

UltraLite ALS Basic Plus Turbo Kit – 200-00114

This Kit includes all the basic tools you will need to detect evidence, conveniently fitting into a carry case configured to accept it all. With more precise detection, you will have more evidence for the conviction.



- Includes:**
- 1 UltraLite Handle
 - 1 Power Pack Adapter
 - 1 Power Supply (90-240 VAC)
 - 1 Vehicle Power Supply (12 VDC)
 - 1 20 ft Extension Cord
 - 1 Battery Charger
 - 3 Rechargeable Battery Packs
 - 1 Pair of Amber Glasses
 - 1 BMT Head
 - 1 UltraLite ALS Case with die-cut foam (not shown)

UltraLite ALS Basic Turbo Kit – 200-00110

This Kit includes all the basic tools you will need to detect evidence, conveniently fitting into a carry case configured to accept it all. With more precise detection, you will have more evidence for the conviction.



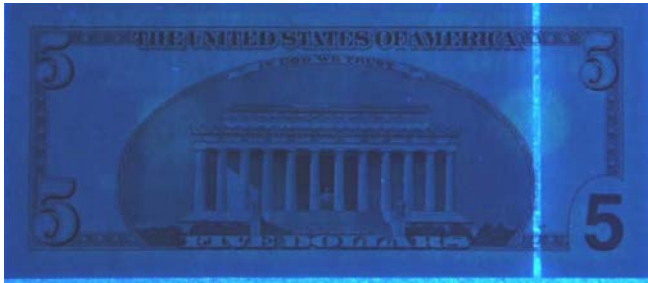
- Includes:**
- 1 UltraLite Handle
 - 1 Power Pack Adapter
 - 1 Power Supply (90-240 VAC)
 - 1 Vehicle Power Supply (12 VDC)
 - 1 20 ft Extension Cord
 - 1 Pair of Amber Glasses
 - 1 BMT Head
 - 1 UltraLite ALS Case with die-cut foam (not shown)

UltraLite ALS Complete IR/UV Turbo Kit – 200-00130

Ultraviolet (UV) and Infrared (IR) light are invisible to human eyes. Despite being invisible, UV is useful because it makes some materials fluoresce, or give off visible light. They both are simple and effective in counterfeit and reprint detection. Both UV and IR lights help you better identify and authenticate genuine, fake, forged, reprinted and altered items such as legal documents, artwork, collectibles, currency and more. This Kit includes all the tools you will need to detect subtle changes to the original document, work of art or collectible.



- Includes:**
- 1 UltraLite Handle
 - 1 Power Supply (90-240 VAC)
 - 1 Battery Charger
 - 3 Rechargeable Battery Packs
 - 1 Pair of Amber Glasses
 - 1 Ultraviolet (UV) Head
 - 1 Infrared (IR) Head
 - 1 Armasight Nyx7 GEN 2+ ID Night Vision Goggles
 - 1 UltraLite ALS Case with die-cut foam (not shown)
- *This kit is not available outside of the USA*



UltraLite ALS Basic IR/UV Turbo Kit – 200-00131

Ultraviolet (UV) and Infrared (IR) light are invisible to human eyes. Despite being invisible, UV is useful because it makes some materials fluoresce, or give off visible light. They both are simple and effective in counterfeit and reprint detection. Both UV and IR lights help you better identify and authenticate genuine, fake, forged, reprinted and altered items such as legal documents, artwork, collectibles, currency and more. The basic tools you will need to detect subtle changes to the original document, work of art or collectible.



Includes:

- 1 UltraLite Handle
 - 1 Power Supply (90-240 VAC)
 - 1 Battery Charger
 - 3 Rechargeable Battery Packs
 - 1 Pair of Amber Glasses
 - 1 Ultraviolet (UV) Head
 - 1 Infrared (IR) Head
 - 1 UltraLite ALS Case with die-cut foam (not shown)
- * IR Goggles or Device not included*

Armasight Nyx-7 Goggle System – 200-00132

The Armasight Nyx-7 is a bi-ocular night vision goggle system. They are an exceptional choice for hands-free use. Built with high-grade optics and simple, reliable electronics, the Nyx-7 provides bright and clear night vision images, even in the most trying conditions. This unit includes a built-in IR light source for reading maps or basic, short-range illumination in complete darkness.



The investigative duties and responsibilities of individuals in the forensic nursing field vary from place to place depending on jurisdiction. At the lowest level of investigation, the nurse may work only in the hospital and only on sexual assault cases looking for various body fluid residuals. At the highest level of investigation they work primarily at the hospital, but may visit a prison to examine not only the victims but also suspects. Cases may range from sexual assault cases to various types of domestic violence cases, to include child abuse.



Keeping in mind the critical needs of UltraLite ALS users, we have assembled kits with an emphasis on hand-held portability and greater flexibility.

UltraLite ALS[®]
TURBO

Complete DVSA Turbo Kit – 200-00109

Our Complete DVSA Turbo Kit is configured to allow greater flexibility and a wider range of investigations for those whose duties may take them out of the hospital.



Includes:

- 1 UltraLite ALS Handle
- 1 UV Magnum Head
- 1 BMT Turbo Head
- 1 White Turbo Head
- 1 Power Supply
- 1 Battery Charger
- 3 Battery Packs
- 1 Pair of Amber Glasses w/bag
- 1 Pair of Red Glasses w/bag
- 1 Pair of Yellow Glasses w/bag
- 1 UltraLite ALS Case with die-cut foam (not shown)

Basic DVSA Kit, UV – 200-00007 Basic DVSA Kit, BMT Turbo – 200-00108

Based off intensive research and interviews with individuals in the forensic nurse field, we have designed a kit to meet the minimum needs with hand-held portability in mind.



Includes:

- 1 UltraLite ALS Handle
 - 1 UV Magnum Head*
 - 1 Power Supply
 - 1 Battery Charger
 - 3 Battery Packs
 - 1 Pair of Amber Glasses w/bag
 - 1 UltraLite ALS Case with die-cut foam (not shown)
- *BMT Turbo Head (Item #200-0108) can be substituted*



Photo courtesy of New Haven University



450 nm BMT Turbo Head – 200-00121

With the BMT Turbo light you only need to go over the scene or evidence once with one filter to complete 99.5% of evidence detection, collection, and documentation work.



400 nm (UV) Magnum Head – 200-00027

UV light has long been used in forensics for locating, collecting, and documenting evidence related to the human body. The UV head enhances body evidence when paired with the yellow filters.



590 nm Yellow Turbo Head – 200-00125

The addition of the 590 nm (Yellow) head will enhance your abilities to locate, collect, and document fingerprints developed with ninhydrin, fiber evidence, and altered document evidence.



525 nm Green Turbo Head – 200-00123

The 525 nm (Green) wavelength can increase the ability to contrast between print and background, especially when used with the red glasses.



630 nm Red Turbo Head – 200-00124

When a document has been altered by the suspect, it is highly improbable that the two would use identical brands of ink. Under red light, the chemicals in the ink used by the suspect may fluoresce, making the alterations very easy to find and document. The addition of the 630 nm (red) head will enhance your abilities to locate, collect, and document fiber evidence, and altered document evidence.



White LED Turbo Head – 200-00126

Use the white head to scan surfaces such as walls, floors, and even documents at progressively lower angles. Footprints and fingerprints that may not have left a residue can still be detected, even in dust or on carpet, by the shadows they throw at shallow angles.



850 nm Infrared (IR) Turbo Head – 200-00128

The 850 nm Infrared (IR) wavelength can detect subtle mechanical and chemical changes of the original document and ink. Modifications to walls or automobiles are often obvious in IR images, and IR images can reveal the use of cleaning solvents to remove blood, dragmarks across carpets, fresh paint, and explosives residues.

UltraLite ALS Heads Wavelengths and Uses

This chart is intended as a guideline in the use of the UltraLite ALS light heads and the goggles or filters for various applications. The BMT Turbo head was specifically designed to address the need of crime scene investigators to process a general crime scene as quickly as possible and to identify the largest amount of material of evidentiary value. If a particular investigation or crime scene requires more specialized processing, or the initial crime scene search with the BMT Turbo light reveals material that could be processed in more detail with other wavelengths, the UltraLite ALS provides the capability to apply the appropriate light sources for specialized processing.

Head	Dominant Output (nm)	Maximum Light Intensity	Glasses/Filters	Forensic Application
UV (Item #200-00027)	400 nm	650 mW	Amber Red Yellow	Body Fluids, Bite Marks, and Bruise Evidence Volatile hydrocarbons and accelerant residues, explosives' wrappings, gunshot residue; subcutaneous injuries and wounds on living and deceased bodies, bruising, bite marks, blood spatter, fingerprints, and fibers.
BMT (Item #200-00121)	450 nm	2000 mW	Amber	99.5% of Detectable Evidence Universal evidence & crime scene processing: body fluids (semen, urine, saliva, sweat), biological stains, hair, fibers, and latent fingerprints.
Green (Item #200-00123)	525 nm	150 lumens 730 mW	Amber Red	Trace Evidence, Fingerprints, and Fibers Fingerprints developed with cyanoacrylate (e.g., super glue) and fingerprint dyes such as rhodamine 6G and DFO; fibers.
Yellow (Item #200-00125)	590 nm	160 lumens 400 mW	Amber Red	Fingerprints, Fibers, and Altered Documents Fingerprints developed with ninhydrin, fiber evidence and altered/questioned documents (the chemicals in the ink will show variations).
Red (Item #200-00124)	630 nm	160 lumens 1250 mW	Amber	Fibers and Altered Documents Fingerprints developed with ninhydrin, altered/questioned documents (the chemicals in the ink will show variations); background reduction.
Infrared (Item #200-00128)	850 nm	800 mW	Infrared detection cameras and other devices	Altered Documents and Trace Subtle mechanical and chemical changes of the original document and ink. Modification to walls or automobiles are often obvious in IR images, and IR images can reveal the use of cleaning solvents to remove blood, dragmarks across carpets, fresh paint, and explosives residues.
White (Item #200-00126)	Full Spectrum 400 - 750 nm 6500 Kelvin	870 lumens 1250 mW	None or Yellow	General crime scene search and illumination; oblique lighting techniques; hair, fiber, and fingerprint detection.

The UltraLite ALS Turbo is the industry standard in hand-held forensic scene lighting.

One of the most powerful handheld solid-state forensic lights in the industry has just gotten more powerful, doubling its output. The industry standard UltraLite ALS is now the UltraLite ALS Turbo. Through the use of light interaction techniques, UltraLite ALS Turbo helps in the detection of trace evidence, body fluids, fingerprints, blood spatter, gunshot residues, and explosive accelerants. These substances may otherwise be difficult to detect against background materials so evidence can remain unseen. It can reveal subcutaneous bruising, injuries and wounds on bodies living and dead, and assist in the location of evidence containing DNA. Doubling the output power means greater levels of evidence visualization.



**Bring Trace Evidence to Light Now with
Twice the Output Power—
Oblique Scene Lighting with UltraLite ALS**

- Blue-Merge Technology (BMT) -
- Four adjustable light power intensity settings -
- Focused beam profile -
- Light-weight, durable, aluminum/magnesium alloy in an ergonomic design -
- Portable, rechargeable battery powered or AC/DC powered -
- Jar resistant with an extended bulb life of 50,000+ hours -
- Multiple interchangeable light heads for a broad spectrum of illumination -
- Convenient carrying case -



UltraLite Charger Kit – 200-00012

The Battery Charger is designed to accept power from virtually any AC power outlet from 90 volts in Japan to 240 volts in Australia to any 90-240 volt generator. A 12 VDC Vehicle Power Adapter is included to recharge your batteries on the road.

Includes:

- 1 Battery Charger
- 3 Rechargeable Battery Packs
- 1 Universal AC Input Power Cord
- 1 DC Power Cord
- (12 VDC Vehicle Power Adapter)



UltraLite ALS 4-Head Kit – 200-00113

This kit contains four accessory heads.

Includes:

- 1 UltraLite UV Magnum Head
- 1 UltraLite Green Turbo Head
- 1 UltraLite Yellow Turbo Head
- 1 UltraLite Red Turbo Head
- 1 Pair of Amber Glasses w/bag
- 1 Pair of Red Glasses w/bag
- 1 Pair of Yellow Glasses w/bag



Armasight Nyx-7 Goggle System – 200-00132

The Armasight Nyx-7 is a bi-ocular night vision goggle system. They are an exceptional choice for hands-free use. Built with high-grade optics and simple, reliable electronics, the Nyx-7 provides bright and clear night vision images, even in the most trying conditions. This unit includes a built-in IR light source for reading maps or basic, short-range illumination in complete darkness.



Photo courtesy of New Haven University



UltraLite ALS Handle – 200-00050

The handle and head are made of an aluminum magnesium alloy. This metal construction yields a rugged and reliable instrument. The UltraLite ALS size, weight and ergonomic design make the easiest and most comfortable-to-use forensic system in the world.



UltraLite Battery Charger – 200-00030

The battery charger is designed to accept power from either the universal AC input power cord or the standard 12 VDC Vehicle Power Adapter. Approximate charge time from dead to fully charged is 3 hours.

UltraLite Rechargeable Battery Pack – 200-00031



Each battery pack contains lithium-ion cells which can be charged several hundred times and will not be subject to the "memory effect".

UltraLite AC/DC Power Pack – 200-00032



With the universal AC input power module you may run the UltraLite ALS off of virtually any AC outlet from 90 volts in Japan to 240 volts in Australia. The 20' cord allows you to process an entire scene without having to unplug. Included in the pack is a 20' Vehicle Power Adapter cord which plugs into any standard 12 VDC allowing you to process an entire vehicle without having to unplug the unit.



UltraLite Glasses - Amber Glasses – 200-00046

The amber (forensic) glasses are perfectly matched to the BMT head but will also work with all heads, allowing you to view multiple types of evidence with just one color of glasses.

Enhance your ability to detect and process evidence with these additional glasses.

Yellow Glasses – 200-00045

Yellow glasses are used with viewing evidence with the 650 nm (UV) and 100 nm (white) heads.

Red Glasses – 200-00044

Red glasses are used for viewing evidence with the BMT, 405 nm, 525 nm, and 590 nm heads.



Power Supply, 12VDC Vehicle Adapter – 200-00034

To operate the UltraLite ALS from any 12 volt DC vehicle power port (cigarette lighter) simply plug the DC Power Cord into the removable Power Pack in the UltraLite ALS Handle and plug the other end into a standard 12 Volt DC vehicle power port. The 20' cord allows you to process an entire vehicle without having to unplug the unit.



Extension Cord, 20 Foot – 200-00060

The extension cord can be used in conjunction with either the universal power supply or the DC Power Cord for extended coverage.



Power Supply, 120-240 VAC 12V-2.5A – 200-00033

With the Universal AC Input Power Supply you may run the UltraLite ALS off of virtually any AC outlet from 90 volts in Japan to 240 volts in Australia or any power generator that produces 90 to 240 VAC. The power supply plugs into the outlet and then plugs into a removable Power Pack in the UltraLite ALS Handle. The cord is 20' long allowing you to process an entire crime scene without having to unplug the unit.



UltraLite ALS Carry Case – 200-00071

The Carry Case is lined with die-cut foam to provide the ultimate protection for your UltraLite ALS. The case was designed, laid out and die-cut to accommodate all available accessories for the UltraLite ALS. This one small case is all you need to carry the entire UltraLite ALS forensic light system.

Height: 5.0 inches (12.70 cm)
Width: 18.38 inches (46.69 cm)
Length: 15.63 inches (39.08 cm)
Dry Weight: 4.1 pounds (1.9 Kg)

NORTHSTAR

The NorthStar™ LED Flare is the next generation of hazard warning and safety flare utilizing the latest in CAO Group's patented Dynasty® high-flux LED Technology. It features a multi-directional beam pattern, making it ideal for emergency lighting applications.

NorthStar was designed to address the demanding conditions of the public safety, fire, and rescue environments, and overcome the shortcomings, dangers, and environmental hazards of existing incendiary flares. In the field, the use of warning flares has shown that even a slight depression in the roadway and other surfaces can obscure the flares visibility even at short distances. Elevating the flare only a few inches has a dramatic effect in the visibility. When flares are used in conjunction with traffic cones the resulting visibility is even greater.

Specifications

Brightness: 33 Lumens

Flare Height: 10.75 inches tall

Weight: 12.8 ounces without batteries.

Bulb: Dynasty high-flux LED which is replaceable.

Bulb Life: 50,000+ hours

Visibility: >2 miles at night and 300 yards in broad daylight.

Stability: When used in its base and set on a level surface, it will not tip over when subject to a 50 mph (80 kph) wind.

Construction: High impact ABS

Ruggedness: NorthStar has a shatter proof lens, a durable impact resistant body and is weather and environment resistant.

Water Resistance: Self-righting when in water. Water resistant to a depth of 30 feet.

Battery Type: 3 "C" cell batteries

Battery Life: 25+ continuous hours with new batteries

Operating Temperature: -5 F to 130 F

Features

Super Bright

Unique Butterfly-Beam™

360° horizontal & 275° vertical visibility

2 flashing speeds & solid-on

Portable, safe & easy to use

High Strength Metal Clip

Fits perfectly in top of traffic cone

Detachable Base

1 year warranty

Safe and Ecological

Will not burn personnel or clothing

No toxic fumes

Environmentally safe

RoHS compliant

No risk of fire or explosion

Safe for indoor use

Does not affect night vision

Does not exhibit point fixation

No smoke or chemical residue

No metal spikes or residue

Designed for use in Hazardous areas



NorthStar LED Flare Basic Kit – 200-00129

Whether you are broke-down on the side of the road, boating, hiking, camping or even assisting children cross the street, this kit is perfect for every situation you could possibly imagine that requires emergency lighting. NorthStar is the next generation of safety flare for everyone everywhere! The NorthStar can be used with or without the base. Flare requires 3 “C” cell batteries (not included).

Includes:
1 Flare Unit
1 Flare Base
Instructions



NorthStar LED Flare Pro Kit – 200-00054

Perfectly suited for the agency looking to replace their old safety flares. This kit is ideal for every patrol car, fire engine and public safety vehicle. This kit comes with 6 LED Flares conveniently attached around a center post for optimal space savings and an easy to carry strap. Each flare requires 3 “C” cell batteries (not included).

Includes:
6 Flare Units
6 Flare Bases
1 Center Carry Frame
1 Carry Strap
Instructions





Fire Departments
 Search & Rescue
 Emergency Services
 Emergency Response Teams



Law Enforcement
 Traffic Control
 Checkpoints
 Incident Management
 Crowd Control
 Lane Closures



Military
 Checkpoints
 Incident Management
 Landing Zones
 Transport



Personal
 Natural Disasters
 Power Failure
 Personal Safety
 Roadside Breakdown
 Emergency Response Teams



Leisure
 Boating
 Hiking
 Recreational Vehicles
 Camping



Miscellaneous
 School Crossing
 Special Events



Industrial
 Industrial Safety
 Warehousing
 Construction/Work Zones



Transportation
 Trucking
 Airports
 And so many more...

SUPER BRIGHT
 Visible Over 2 Miles

HIGH STRENGTH METAL CLIP

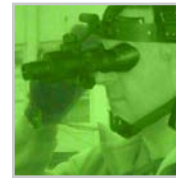


**STANDS NEAR
 11" TALL**



ITEM#	PRODUCT DESCRIPTION	PAGE#
200-00106	UltraLite ALS Ultra Turbo Kit	8
200-00111	UltraLite ALS Complete Turbo Kit	8
200-00114	UltraLite ALS Basic Plus Turbo Kit	9
200-00110	UltraLite ALS Basic Turbo Kit	9
200-00130	UltraLite ALS Complete IR/UV Turbo Kit	10
200-00131	UltraLite ALS Basic IR/UV Turbo Kit	11
200-00109	UltraLite ALS Complete Turbo DVSA Kit	13
200-00108	UltraLite ALS Basic BMT Turbo DVSA Kit	13
200-00107	UltraLite ALS Basic UV Turbo DVSA Kit	13
200-00121	UltraLite ALS BMT Turbo Head	14
200-00027	UltraLite ALS UV Magnum Turbo Head	14
200-00125	UltraLite ALS Yellow Turbo Head	14
200-00123	UltraLite ALS Green Turbo Head	14
200-00124	UltraLite ALS Red Turbo Head	14
200-00126	UltraLite ALS White Turbo Head	14
200-00128	UltraLite ALS IR Turbo Head	14
200-00012	UltraLite ALS Charger Kit	17
200-00113	UltraLite ALS 4 Turbo Head Kit	17
200-00132	Armasight Nyx-7 Goggle System	11 & 17
200-00050	UltraLite ALS Handle	18
200-00030	UltraLite ALS Battery Charger	18
200-00031	UltraLite ALS Rechargeable Battery Pack	18
200-00032	UltraLite ALS Power Pack	18
200-00046	UltraLite Glasses - Amber	19
200-00045	UltraLite Glasses - Yellow	19
200-00044	UltraLite Glasses - Red	19
200-00034	Power Supply, 12VDC Vehicle Adapter	19
200-00060	Extension Cord 20 ft.	19
200-00033	Power Supply, 120-240VAC 12V-2.5A	19
200-00071	UltraLite Carry Case	19
200-00072	Replacement Foam for Case	-
200-00129	NorthStar LED Flare Basic Kit	22
200-00054	NorthStar LED Flare Pro Kit	22

Contact us, we can help.
877.877.9778



4628 W. Skyhawk Drive

West Jordan, Utah 84084

P: 801.256.9282 F: 801.256.9287

Toll Free: 877.877.9778

Email: forensic@caogroup.com

northstar@caogroup.com

www.caogroup.com/forensic